

# E600 SERIES

ELECTRIC BOOM LIFTS



## Performance

|                              |                     |                        |
|------------------------------|---------------------|------------------------|
| Platform Height              |                     |                        |
| E600J/M600J                  | 60 ft 4 in.         | 18.39 m                |
| E600JP/M600JP                | 60 ft 4 in.         | 18.39 m                |
| Horizontal Outreach          |                     |                        |
| E600J/M600J                  | 43 ft 3 in.         | 13.18 m                |
| E600JP/M600JP                | 44 ft 5 in.         | 13.54 m                |
| Swing                        | 400° Non-Continuous |                        |
| Platform Capacity            | 500 lb              | 227 kg                 |
| Platform Rotator             | 180° Hydraulic      |                        |
| Weight <sup>1</sup>          |                     |                        |
| E600J/M600J                  | 15,200 lb           | 6,894 kg               |
| E600JP/M600JP                | 15,750 lb           | 7,144 kg               |
| Max. Ground Bearing Pressure |                     |                        |
| E600J/M600J                  | 52 psi              | 3.7 kg/cm <sup>2</sup> |
| E600JP/M600JP                | 51 psi              | 3.6 kg/cm <sup>2</sup> |
| Drive Speed                  | 3.0 mph             | 4.8 km/h               |
| Gradeability 2WD             | 30%                 |                        |
| Gradeability 4WD             | 45%                 |                        |
| Axle Oscillation             | 8 in.               | 20 cm                  |
| Turning Radius               |                     |                        |
| Inside                       | 4 ft                | 1.22 m                 |
| Outside                      | 15 ft 4 in.         | 4.67 m                 |

1. Certain options or country standards increase weight.  
2. Ground bearing pressure applies to standard tires.

## Standard Specifications

### Power Source

|                          |                                       |
|--------------------------|---------------------------------------|
| Electrical System        | 48V DC                                |
| Batteries                | 8 x 6V, 415 amp-hr                    |
| Drive Motors             | Dual Electric Traction — Brushless AC |
| Generator Set (M Models) |                                       |
| Diesel Engine            |                                       |
| Kubota 45 amp            | 6.7 hp      4.99 kW                   |
| Fuel Tank Capacity       | 13 gal      49.21 L                   |

### Hydraulic System

|              |                              |         |
|--------------|------------------------------|---------|
| • Capacity   | 15 gal                       | 56.78 L |
| • Motor/pump | Series Wound Motor/Gear Pump |         |

### Tires

|            |                                    |
|------------|------------------------------------|
| • Standard | 36 x 14-22.5 Non-Marking Pneumatic |
|------------|------------------------------------|

## Standard Features

- 6 ft (1.83 m) Articulating Jib
- 6 ft (1.83 m) Vertical and Lateral Articulating Jib (E/M600JP Only)
- Brushless AC Motors
- Operators Tool Tray
- Inward Self-Closing Swing Gate
- Platform Console Machine Status Light Panel<sup>1</sup>
- 110V-AC GFI Receptacle in the Platform
- Tilt Light and Alarm



- Hourmeter
- Battery Condition Indicator
- Lifting/Tie Down Lugs
- 400 Degree Non-Continuous Rotation
- Removable Battery Box
- Oscillating Axle
- Manual Descent
- Automatic Traction Control (ATC)
- SCR Automatic Battery Charger
- All Motion Alarm

\*Provides indicator lights at platform control console for system distress, fuel level, low fuel, 5 degree tilt light and foot switch status.

## Accessories & Options

- 30 x 48 in. (0.76 x 1.22 m) Platform
- Mesh to Top Rail Bolt-on Aluminum
- Soft Touch System (E/M600J only)
- Platform Padding (30 x 72 in. Platform)
- 1/2 in. Airline to Platform
- Foam-Filled Tires
- 1200W Inverter
- Hostile Environment Kit<sup>1</sup>
- UL<sup>®</sup> EE Rating<sup>2</sup>
- Tow Package<sup>3</sup>
- Light Package<sup>4</sup>
- Cold Weather Package, Diesel<sup>5</sup>
- Platform Worklights
- Flashing Amber Beacon

1. Includes console cover, boom wipers and cylinder bellows.  
2. Not available on Multi-Powered models.  
3. 2WD only.  
4. Includes head and tail lights, and platform worklights.  
5. Includes hydraulic tank heater, battery heater, and heater pad for block.

Note: Some options may increase lead time, and some option combinations may not be available.

# E600 SERIES

ELECTRIC BOOM LIFTS

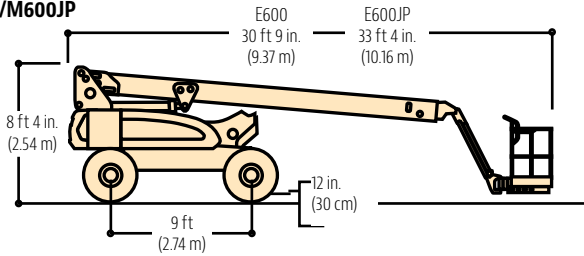


## Dimensions

All dimensions are approximate.

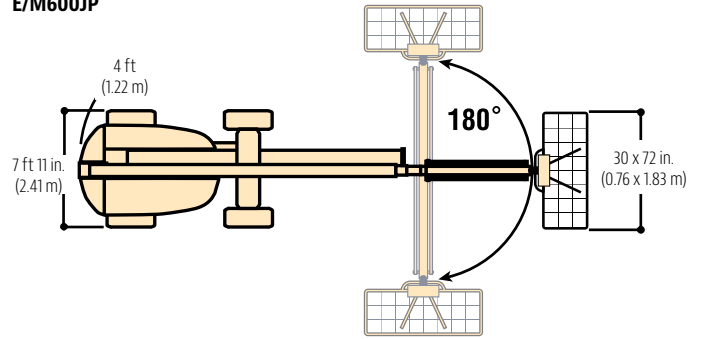
### E/M600J

### E/M600JP



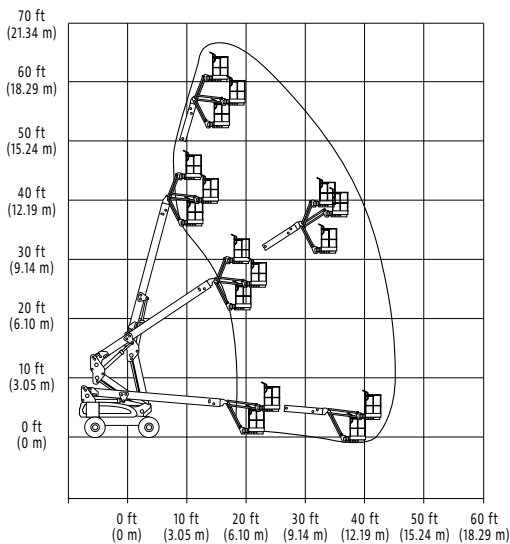
### E/M600J

### E/M600JP

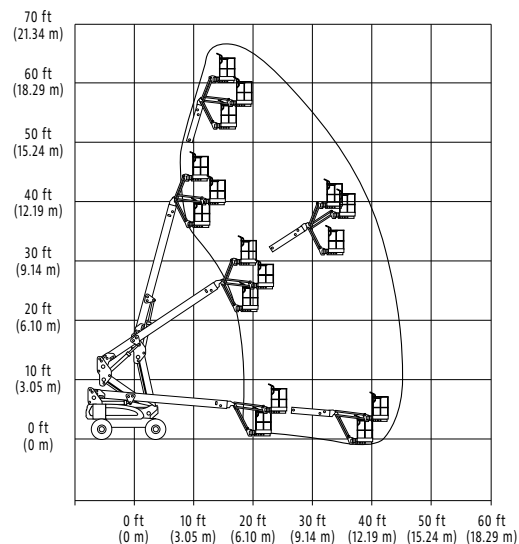


## Reach Diagrams

### E600J



### E600JP



## The JLG "1 & 5" Warranty

JLG Industries, Inc. backs its products with its exclusive "1 & 5" Warranty. We provide coverage on all products for one (1) full year, and cover all specified major structural components for five (5) years. Due to continuous product improvements, we reserve the right to make specification and/or equipment changes without prior notification. This machine meets or exceeds applicable OSHA Regulations in 29 CFR 1910.67, 29 CFR 1926.453, ANSI A92.5-2006, and CSA Standard CAN3-B354.2-M82, as originally manufactured for intended applications.

Part No.: 3131027  
R071608  
Printed in USA



JLG Industries, Inc.  
1 JLG Drive  
McConnellsburg, PA 17233-9533  
Telephone 717-485-5161  
Toll-free in US 877-JLG-LIFT  
Fax 717-485-6417  
www.jlg.com

An Oshkosh Corporation Company